

# Industrial Skills



**SkillCheck's computer-based Industrial Skills tests let you easily determine whether industrial trainees and job applicants have what it takes to be successful in today's industrial jobs.**

Available on CD or on the Internet, SkillCheck Industrial Skills tests measure a candidate's general industrial knowledge, skills and abilities, safety orientation, as well as specialised knowledge in areas such as construction, metalworking and plumbing,

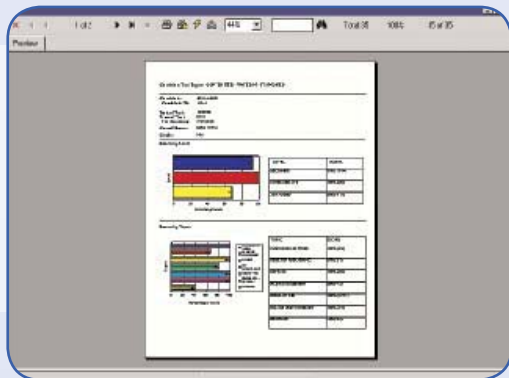
Fast, efficient Quick Assessments are also available for evaluating specialized skills such as plumbing and electrical work.

**• Advanced Reporting**

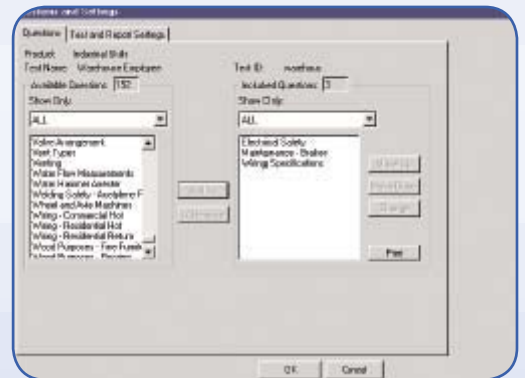
With the click of a mouse, SkillCheck's advanced reporting functionality lets you analyze a candidate's test performance against that of other test takers. SkillCheck profile reports can also display data from all tests taken by a single candidate, or all candidates who have taken a particular test.

**• Advanced Test Making**

With SkillCheck's advanced test-making option, you can create your own test questions and combine those questions with any SkillCheck questions to build a custom skills test that perfectly addresses the requirements of a particular job or training program.



Test administrators can customise tests any number of ways - even create their own questions



New advanced reporting allows you to view individual and group test scores with graphs and other formatting and analysis



SkillCheck's Industrial Skills tests cover a wide variety of industrial and safety skills

## Light Industrial Skills Assessments

Test	Items	Descriptions
Automotive	30	Questions cover topics such as internal combustion engines, auto body, tools and automotive systems
Basic Math Skills	40	This test measures skills in basic mathematics commonly used in a light industrial environment including addition, subtraction, multiplication and division of whole numbers, fractions, decimals and time. Includes both numeric and word problems.
Construction	40	Questions cover topics such as woodworking, electrical and plumbing
Count and Stack	20	This test measures the ability to identify by sight the number of boxes or other items in a stack, some of which are viewable, some of which are hidden from view.
Fire/Personnel	30	Questions cover topics such as fire prevention and industrial safety equipment
Forklift	30	This test measures understanding of operations and safety issues related to the use of a forklift in an industrial environment such as a warehouse.
HAZMAT	30	Questions cover topics such as standard handling and disposal of hazardous materials
HAZMAT	30	Questions cover topics such as standard handling and disposal of hazardous materials
Industrial Math	30	Questions cover industrial math skills such as calculations and conversions of distance, area and volume, fractions and decimals.
Language Skills	30	This test measures basic level skills in spelling, grammar and vocabulary related to terminology often used in a light industrial environment.
Machines	55	Questions cover topics such as metalworking, automotive and basic machine concepts
Metalworking	30	Questions cover topics such as metal properties, tools and fabrication principles
Pick and Pack	35	This test measures the ability to identify and cross reference information found on common warehouse documents such as product or package labels, inventory forms, bills of lading and shipping documents.
Plumbing	30	Questions cover topics such as types of piping/materials, techniques, tools and basic regulations
Reading Comprehension -Industrial	43	This test measures basic reading comprehension abilities, asking the candidate to answer questions based on the text in a reading passage.
Ruler - English Units	20	This test assesses the ability to measure or identify the measurement of objects using a ruler with English measurement units.
Ruler - Metric Units	20	This test assesses the ability to measure or identify the measurement of objects using a ruler with metric measurement units.
Safety	30	This test measures understanding of practical safety considerations for a warehouse or industrial environment including use of hazardous materials, prevention of accidents and emergency procedures.
Shipping and Receiving	30	This test measures understanding of operations and safety issues related to shipping and receiving, including basic warehouse safety and procedures, proper stacking, storage and transport of material and the ability to identify information in common shipping forms.
Shop Math	30	This test measures mathematical skill related to typical industrial situations and diagram, including basic mathematics and geometry, the ability to identify dimensions of common objects, and reading diagrams.
Quick Assessment -Electrical	25	Questions cover topics such as basic wiring, fixtures, tools, materials and basic regulations
Quick Assessment -Woodworking	25	Questions cover topics such as tools, materials and basic techniques
Units and Conversions	25	This test measures the ability to identify and perform calculations on units, including English and metric units of length, area and volume.

### Crisp MCS

45 Queen Street, Exeter, EX4 3SR

Tel: +44 (0) 8703 213444

Fax: +44 (0) 1392 421942

Email: [info@crisp-mcs.com](mailto:info@crisp-mcs.com)

Web: [www.crisp-mcs.com](http://www.crisp-mcs.com)

**Crisp MCS**, trading as part of the Crisp Group.

Registered Office: MCS (GB) Limited, of 45 Queen Street, Exeter, Devon EX4 3SR,  
is a company registered in England and Wales with the company number 04186546.

VAT no. 818 311 837